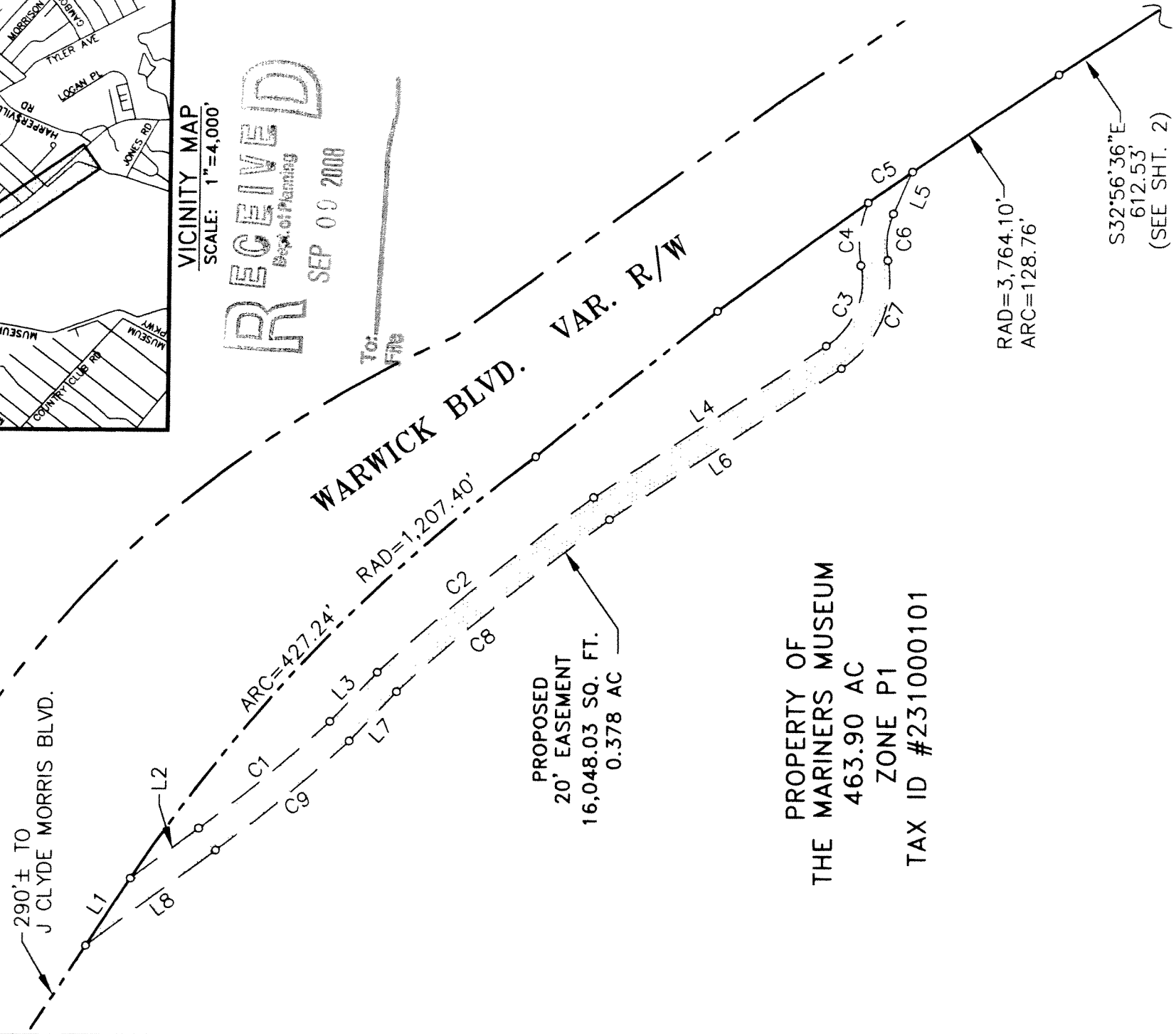


VICINITY MAP  
SCALE: 1"=4,000'

**RECEIVED**  
Dept. of Planning  
SEP 00 2008

J CLYDE MORRIS BLVD  
290'± TO J CLYDE MORRIS BLVD.



PROPOSED  
20' EASEMENT  
16,048.03 SQ. FT.  
0.378 AC

PROPERTY OF  
THE MARINERS MUSEUM  
463.90 AC  
ZONE P1  
TAX ID #231000101

RAD=3,764.10'  
ARC=128.76'

S32°56'36"E  
612.53'  
(SEE SHT. 2)



CITY OF  
NEWPORT NEWS  
DEPT. OF ENGINEERING

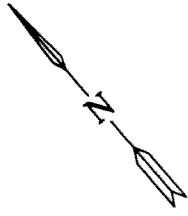
**NOTE:**

TRAIL MATERIALS TO BE APPROVED  
BY MARINERS MUSEUM.

PLAT SHOWING  
20' EASEMENT CONVEYED BY THE  
MARINERS MUSEUM TO THE  
CITY OF NEWPORT NEWS  
FOR THE PURPOSE OF  
FITNESS TRAIL  
84,645.02 SQ. FT. 1.943 AC  
CITY OF NEWPORT NEWS, VIRGINIA

SCALE: 1" = 100'  
DATE: 04/5/07

DRN.BY: SWS  
APR.BY:



S32°56'36"E  
612.53'  
(SEE SHT. 1)

PROPERTY OF  
THE MARINERS MUSEUM  
463.90 AC  
TAX ID #231000101  
ZONE P1

PROPOSED  
20' EASEMENT  
34,127.87 SQ. FT.  
0.78 AC

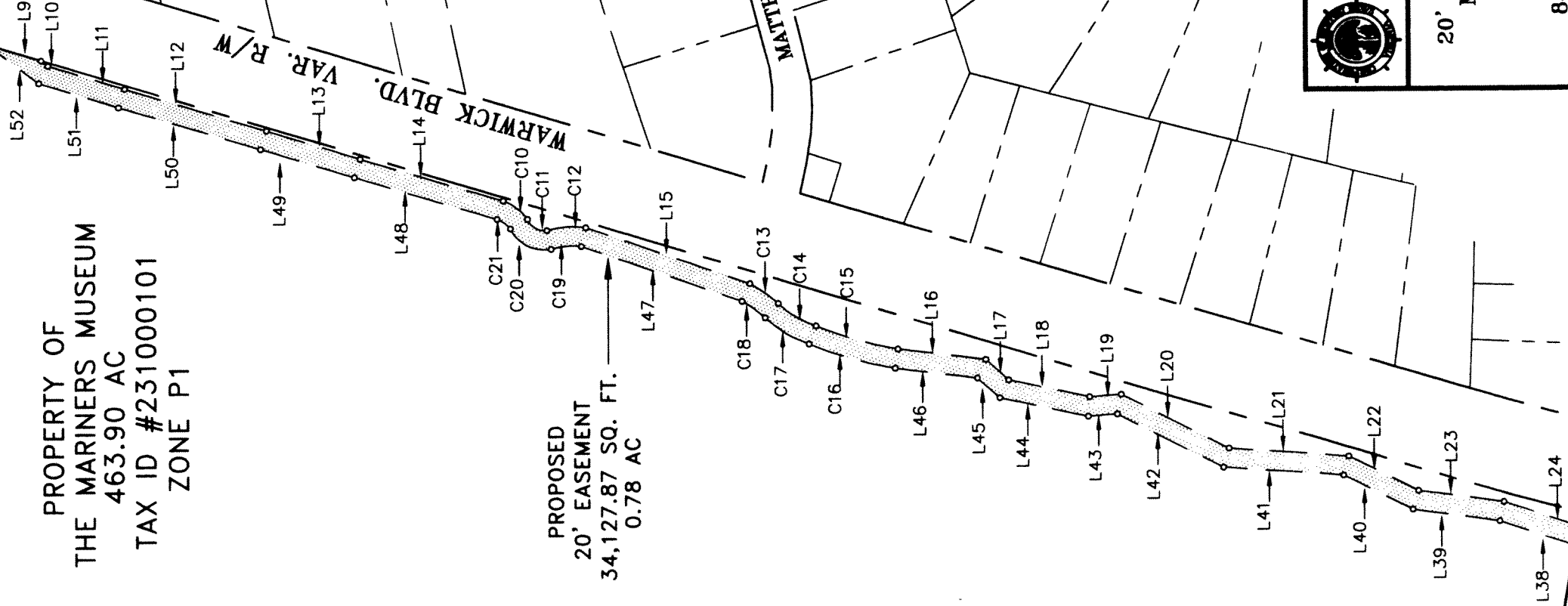
LAKE MAURY

GATEWOOD RD. 30' R/W

WARWICK BLVD. VAR. R/W

COMMODORE DR.

MATTHEW RD.  
40' R/W



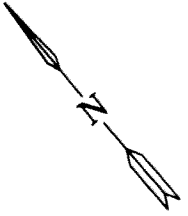
CITY OF  
NEWPORT NEWS  
DEPT. OF ENGINEERING

PLAT SHOWING  
20' EASEMENT CONVEYED BY THE  
MARINERS MUSEUM TO THE  
CITY OF NEWPORT NEWS  
FOR THE PURPOSE OF  
FITNESS TRAIL

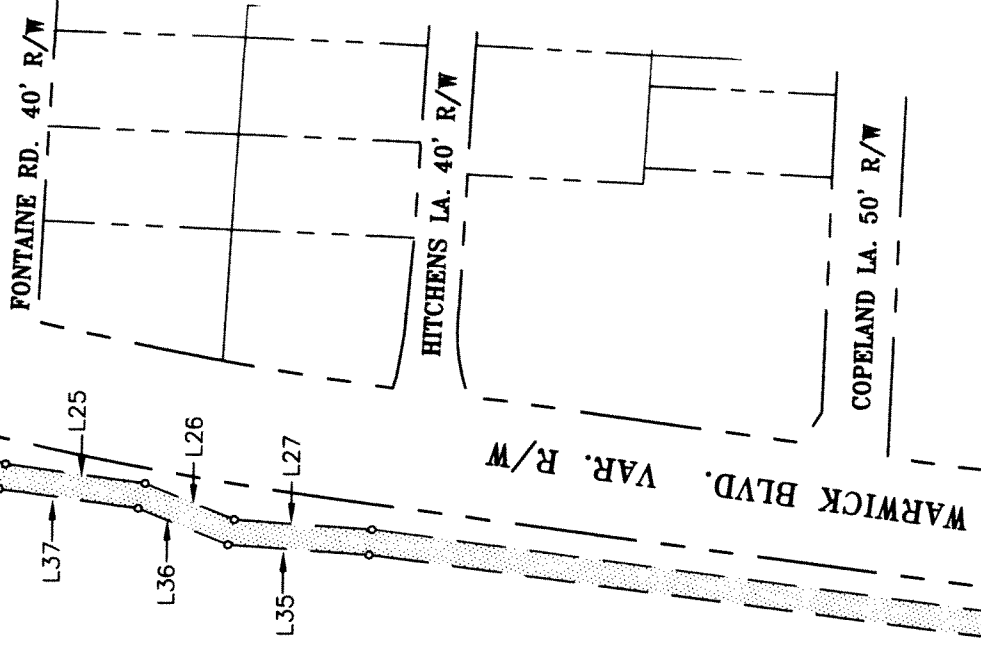
84,645.02 SQ. FT. 1.943 AC  
CITY OF NEWPORT NEWS, VIRGINIA

SCALE: 1" = 150'  
DATE: 04/5/07

DRN.BY: SWS  
APR.BY:



MATCH LINE SEE SHT. 3



PROPERTY OF  
 THE MARINERS MUSEUM  
 463.90 AC  
 ZONE P1  
 TAX ID #231000101

PROPOSED  
 20' EASEMENT  
 34,469.12 SQ. FT.  
 0.79 AC

PROPERTY OF  
 VIRGINIA HEALTH SERVICES, INC  
 DB 1564 PG 2104  
 ZONE C1  
 TAX ID #252000307



CITY OF  
 NEWPORT NEWS  
 DEPT. OF ENGINEERING

PLAT SHOWING

20' EASEMENT CONVEYED BY THE  
 MARINERS MUSEUM TO THE  
 CITY OF NEWPORT NEWS  
 FOR THE PURPOSE OF  
 FITNESS TRAIL  
 84,645.02 SQ. FT. 1.943 AC  
 CITY OF NEWPORT NEWS, VIRGINIA

SCALE: 1" = 150'  
 DATE: 04/5/07

DRN.BY: SWS  
 APR.BY:

SHEET 3 OF 4

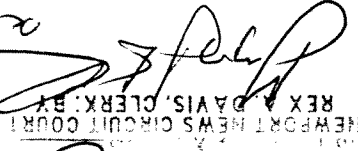
LINE TABLE		
LINE	LENGTH	BEARING
L1	58.97'	S57°18'40"E
L2	60.95'	S37°29'10"E
L3	49.76'	S46°39'02"E
L4	201.37'	S34°00'18"E
L5	33.64'	N66°01'43"W
L6	200.95'	N34°00'18"W
L7	49.79'	N46°39'02"W
L8	116.34'	N37°29'10"W
L9	56.26'	S32°56'36"E
L10	8.94'	S12°07'06"E
L11	81.11'	S32°46'00"E
L12	150.52'	S33°08'09"E
L13	100.15'	S32°44'32"E
L14	152.53'	S33°18'37"E
L15	178.06'	S30°47'17"E
L16	89.98'	S43°02'49"E
L17	31.67'	S07°59'15"E
L18	84.84'	S37°46'10"E
L19	33.09'	S53°56'01"E
L20	123.69'	S22°36'13"E
L21	123.48'	S45°16'45"E
L22	79.34'	S23°39'52"E
L23	89.27'	S42°21'49"E
L24	136.67'	S31°50'12"E
L25	108.46'	S42°26'58"E
L26	74.16'	S28°06'46"E

LINE TABLE		
LINE	LENGTH	BEARING
L27	105.58'	S46°15'37"E
L28	1125.64'	S42°53'16"E
L29	108.24'	S35°25'47"E
L30	81.74'	S58°25'05"E
L31	20.08'	S26°35'51"W
L32	87.55'	N58°25'05"W
L33	111.00'	N35°25'47"W
L34	1123.75'	N42°53'16"W
L35	108.19'	N46°15'37"W
L36	74.84'	N28°06'46"W
L37	107.80'	N42°26'58"W
L38	136.69'	N31°50'12"W
L39	90.72'	N42°21'49"W
L40	78.82'	N23°39'52"W
L41	123.67'	N45°16'45"W
L42	122.10'	N22°36'13"W
L43	30.32'	N53°56'01"W
L44	93.00'	N37°46'10"W
L45	30.67'	N07°59'15"W
L46	84.10'	N43°02'49"W
L47	174.40'	N30°47'17"W
L48	152.19'	N33°18'37"W
L49	100.18'	N32°44'32"W
L50	150.51'	N33°08'09"W
L51	84.82'	N32°46'00"W
L52	65.16'	N12°07'06"W

CURVE TABLE

Curve	Radius	Chord Bearing	Distance	Arc Length	Tangent	Delta
C1	1181.00'	S39°58'12"E	122.06'	122.11'	61.11'	5°55'27"
C2	1653.00'	S39°37'29"E	202.85'	202.98'	101.62'	7°02'08"
C3	58.00'	S67°25'47"E	64.39'	68.26'	38.70'	67°25'49"
C4	78.00'	S83°48'15"E	46.50'	47.21'	24.35'	34°40'52"
C5	3764.10'	S35°24'46"E	39.27'	39.27'	19.64'	0°35'52"
C6	58.00'	N83°48'15"W	34.57'	35.11'	18.11'	34°40'52"
C7	78.00'	N67°26'59"W	86.54'	91.74'	52.01'	67°23'25"
C8	1633.00'	N39°37'14"W	199.42'	199.55'	99.90'	7°00'05"
C9	1201.00'	N39°59'15"W	124.69'	124.75'	62.43'	5°57'04"
C10	49.20'	S12°30'51"E	31.37'	31.92'	16.55'	37°10'30"
C11	18.68'	S19°05'50"E	22.96'	24.72'	14.55'	75°49'35"
C12	96.68'	S53°59'43"E	40.32'	40.62'	20.61'	24°04'13"
C13	140.41'	S14°38'36"E	35.91'	36.01'	18.11'	14°41'43"
C14	111.32'	S18°58'04"E	45.04'	45.35'	23.00'	23°20'37"
C15	379.91'	S34°00'07"E	86.68'	86.87'	43.62'	13°06'03"
C16	399.91'	N34°04'20"W	91.14'	91.34'	45.87'	13°05'12"
C17	131.32'	N18°50'34"W	52.57'	52.93'	26.83'	23°05'38"
C18	120.41'	N14°17'29"W	29.33'	29.40'	14.77'	13°59'28"
C19	76.68'	N55°08'05"W	31.35'	31.57'	16.01'	23°35'35"
C20	38.68'	N22°41'32"W	46.78'	50.23'	29.36'	74°24'22"
C21	29.20'	N13°42'41"W	16.81'	17.05'	8.78'	33°27'50"

080018674  
 DOC NO  
 RECORDED  
 2008 SEP -3 PM 3:26

NEWPORT NEWS CIRCUIT COURT  
 REX DAVIS, CLERK BY  




CITY OF  
 NEWPORT NEWS  
 DEPT. OF ENGINEERING

PLAT SHOWING

20' EASEMENT CONVEYED BY THE  
 MARINERS MUSEUM TO THE  
 CITY OF NEWPORT NEWS  
 FOR THE PURPOSE OF  
 FITNESS TRAIL

84,645.02 SQ. FT. 1.943 AC  
 CITY OF NEWPORT NEWS, VIRGINIA

SCALE: NTS  
 DATE: 04/5/07  
 DRN.BY: SWS  
 APR.BY: