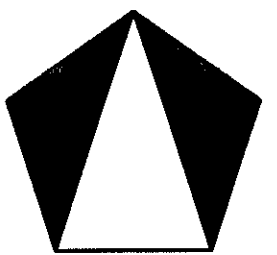
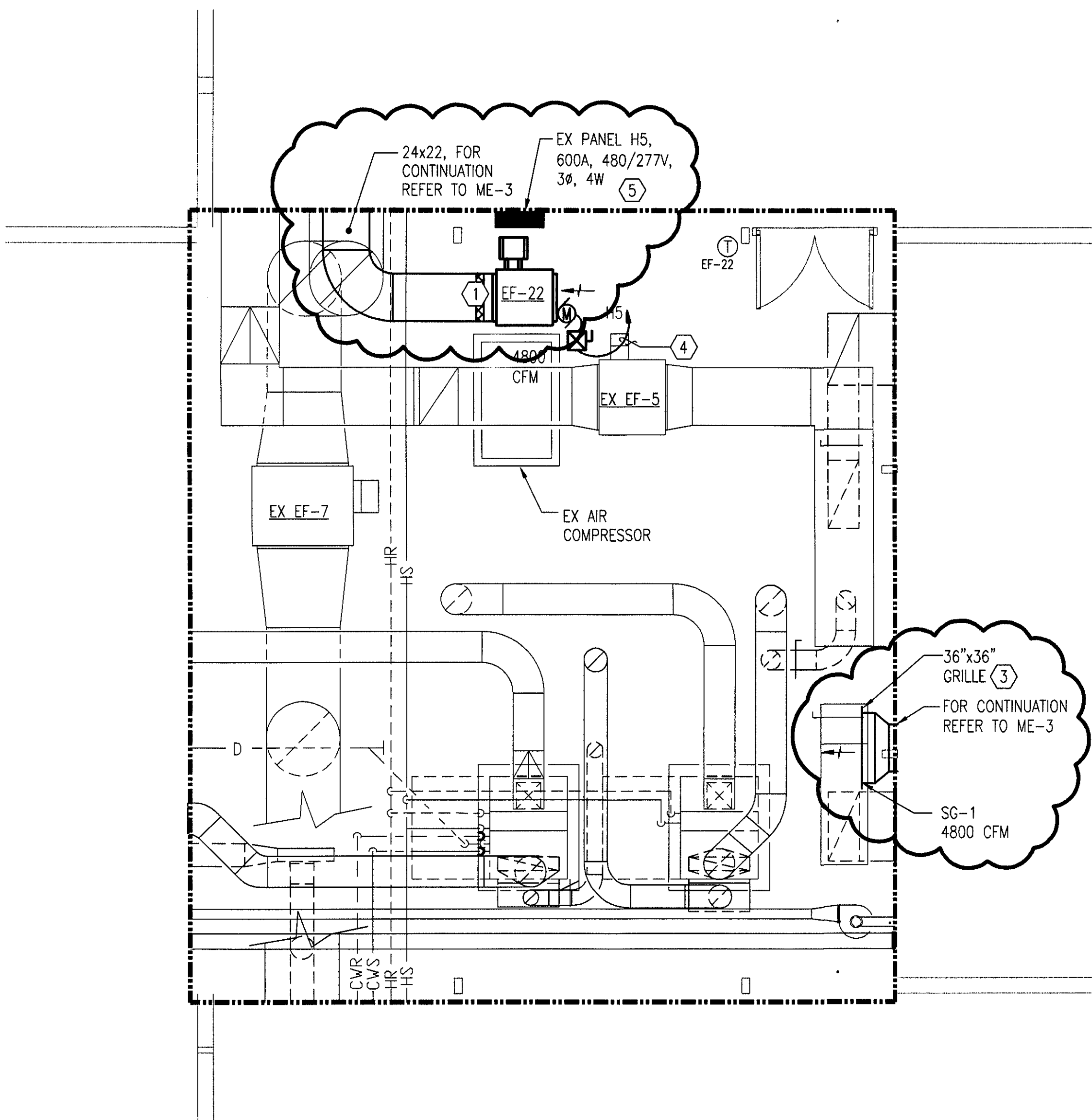
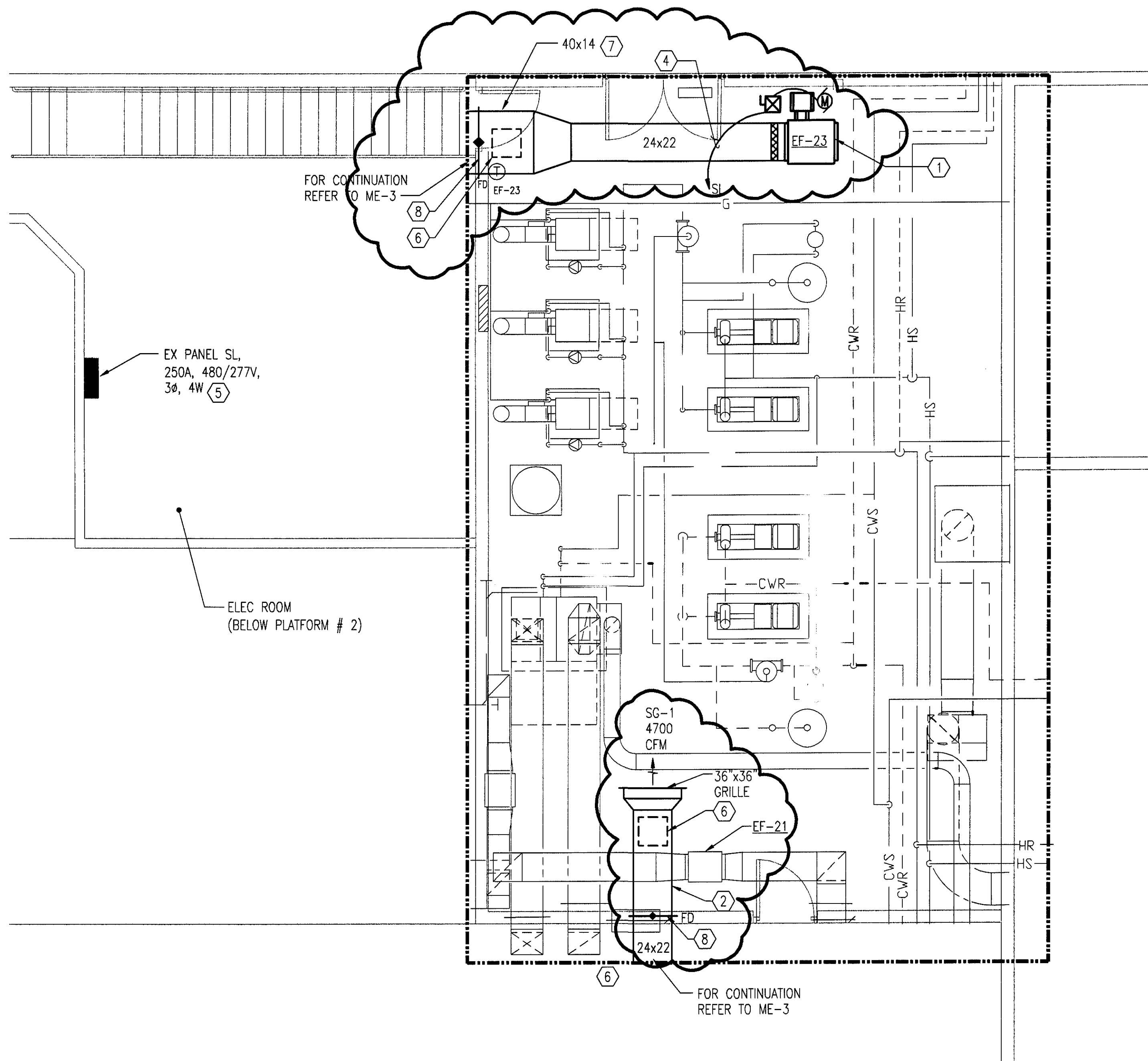


REVISIONS	
Addendum No. 2	5/14/2009

**NEWPORT NEWS WATERWORKS**  
  
**CITY OF NEWPORT NEWS**  
**DEPARTMENT OF PUBLIC UTILITIES**  
**NEWPORT NEWS, VIRGINIA**  
**LEE HALL**  
**MAINTENANCE AND OPERATIONS CENTER**



**SECOND LEVEL PARTIAL FLOOR PLAN**  
**PLATFORM 1 - NEW WORK**  
 ME-4 SCALE: 1/4" = 1'-0"



**SECOND LEVEL PARTIAL FLOOR PLAN**  
**PLATFORM 2 - NEW WORK**  
 ME-4 SCALE: 1/4" = 1'-0"

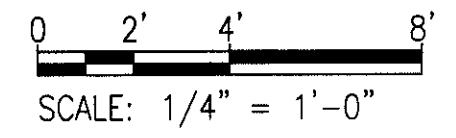
**SPECIFIC NOTES**

- 1 PROVIDE IN-LINE EXHAUST FAN AND LOCATE 9 FEET AFF.
- 2 DUCT SHALL RUN ABOVE EF-21. LOCATE GRILLE AND DUCT TO AVOID EF-21 AND HANGERS.
- 3 SUPPLY AIR GRILLE SHALL BE LOCATED 9 FEET AFF.
- 4 3#12 & 1#12 G - 3/4" C.
- 5 PROVIDE 3P-15A CIRCUIT BREAKER IN EXISTING PANEL AND CONNECT TO NEW CIRCUIT, CIRCUIT BREAKER SHALL MATCH EXISTING.
- 6 PROVIDE 18"x18" DUCT ACCESS FOR FD ACCESS. MAINTAIN CLEARANCE BELOW DOOR FOR ACCESS.
- 7 TRANSITION DUCT TO RUN BETWEEN CONDUITS IN MECHANICAL ROOM.
- 8 FIRE DAMPER SHALL BE 1 1/2 HOUR RATED CURTAIN TYPE AS MANUFACTURED BY RUSKIN MODEL D1BD OR EQUAL.

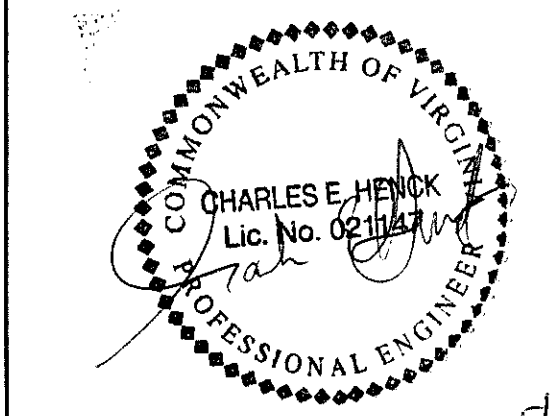
**DRAWING NOTES**

- 1. THERMOSTATS SHALL BE LINE VOLTAGE ON/OFF SOLID STATE TYPE WITH 55° TO 100° SETPOINT RANGE AND 1° MAXIMUM DIFFERENTIAL.
- 2. LOUVER TO BE FACTORY FINISHED; FLUOROPOLYMER 3-COAT SYSTEM; COLOR TO MATCH OTHER EXISTING LOUVERS. PROVIDE AND INSTALL BIRDSCREEN.

**GRAPHIC SCALES**



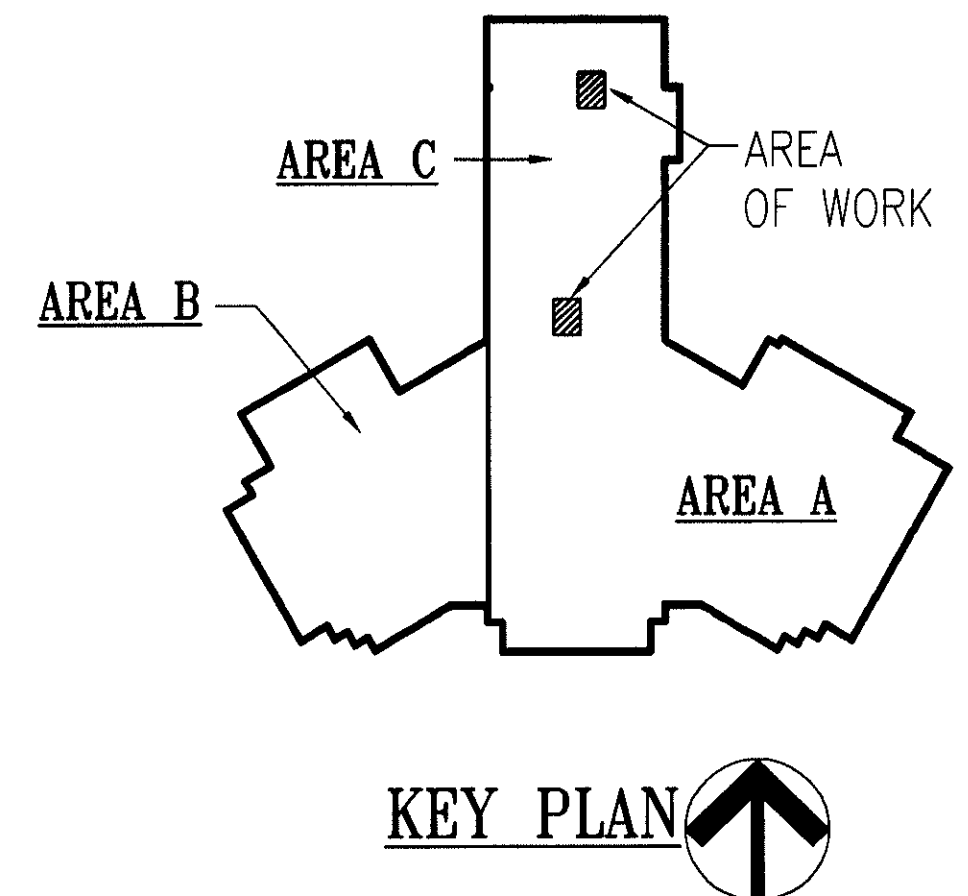
**SIGNATURE**



WHITMAN, REQUARDT & ASSOCIATES, LLP  
 11870 MERCHANTS WALK, SUITE 100, NEWPORT NEWS, VA 23606



**SECOND LEVEL FLOOR**  
**PARTIAL PLAN PART C**  
**NEW WORK**  
 Drawing No.  
**ME-4**



Scale: 1/4" = 1'-0"  
 Date: APRIL 2009 Sheet 5 of 7  
 Des: SPR Drawn: PBF Check: CEH