

**CERTIFICATION AUDIT REPORT
TO THE
BOARD OF JUVENILE JUSTICE**

PROGRAM AUDITED:

Newport News Juvenile Detention Home
350 25th Street
Newport News, Virginia 23607
(757)926-1610
larobins@nngov.com

AUDIT DATE:

February 3-5, 2009

**PREVIOUS AUDIT DATE/
DEFICIENCIES:**

February 13-14, 2006/
Seven

NAME OF ADMINISTRATOR:

Larry Robinson, Director

TEAM LEADER: Paul Reaves, Jr. Certification Analyst

TEAM MEMBERS: Clarice Booker, Certification Analyst
Mark Lewis, Certification Analyst
Nancy Cludinski, Merrimac JDC
Lloyd Jackson, Central Office
Marilyn Miller, Central Office
Jacqueline Smith, Norfolk JDC
Anthony Adams, Richmond JDC

STANDARDS: Interim Standards for Residential Facilities for Children
BJJ Standards for Juvenile Residential Facilities

PROGRAM DATA:

- Population: 82 (at time of audit)
- Gender: Male and Female
- Age Range: 8-17
- Funding Sources: State - \$2,325,800
Local - \$3,515,642
- Staffing: Administrative (3)
Supervision (88)
Support (21)
- Additional Data Resource Guide information attached.

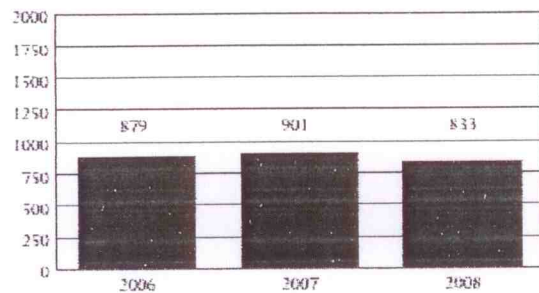
Newport News Secure Detention

Superintendent: Sheena Christian-Howard
Capacity: 110 beds

350 25th Street
Newport News, Virginia 23607
757-926-1600

Owned by: The city of Newport News. Primary users: The cities of Hampton and Newport News.

ADMISSIONS, FY 2006-2008



DAI SCORES AT ADMISSION*, FY 2006-2008

DAI Scores	2006	2007	2008
0-9 (Release)	6.9%	6.9%	5.4%
10-14 (Detention Alternative)	18.3%	14.9%	16.3%
15+ (Secure Detention)	72.4%	74.0%	75.3%
Missing	2.4%	4.2%	3.0%

*Only includes Pre-D and 'non-judge ordered' cases

ADMISSIONS BY DEMOGRAPHICS*, FY 2006-2008

Demographics	2006	2007	2008
Race			
Black	82.8%	80.5%	79.7%
White	14.8%	16.8%	15.7%
Other	2.4%	2.8%	4.6%
Ethnicity - Hispanic	2.0%	1.9%	2.8%
Sex			
Male	80.0%	82.9%	76.7%
Female	20.0%	17.1%	23.3%
Age			
8-12	2.3%	2.9%	1.9%
13	4.7%	4.7%	6.8%
14	10.8%	13.1%	10.4%
15	23.1%	23.2%	23.5%
16	30.9%	29.6%	25.8%
17	28.2%	26.5%	31.5%
18-20	0.0%	0.0%	0.0%
Error/Missing	0.0%	0.0%	0.0%
Total Admissions	879	901	833

*Racial and Ethnic data may not be comparable to prior Data Resource Guides. See page 13 for a discussion of the methodological changes.

All data were downloaded on 11/13/2008. Any changes after that date are not reflected in this book. Percentages may not add to 100% due to rounding.

Source of Admissions:

- 99.4% of admissions were from the 7th and 8th Districts. See pages 36-37 and 38-39, respectively, for data pertaining to these CSUs.
- Weekender admissions were counted as a single admission. Data presented will not be comparable to data in Data Resource Guides before FY 2004.

Juveniles Admitted to Detention:

- 402 juveniles were admitted once to detention and 172 juveniles were admitted multiple times, for a total of 574 juveniles and 833 detention admissions.

Admission Trends:

- Admissions decreased 5% between FY 2006 and FY 2008 and 8% between FY 2007 and FY 2008.

DAI Scores at Admission (FY 2008):

- Of the juveniles who were detained, 75.3% had a DAI score indicating secure detention.
- Of the juveniles who received a score of less than 15, 11.1% had mandatory overrides.

Offense Category (Most serious detaining offense):

- Pre-D - Assault (14.9%) or Robbery (14.2%)
- Post-D - Contempt of Court (36.9%)

Offense Severity (Most serious detaining offense):

- Felony - 57.5% of Pre-D; 16.1% of Post-D
- Class 1 Misdemeanor - 24.1% of Pre-D; 25.5% of Post-D
- Probation/Parole Violation - 8.3% of Pre-D; 16.1% of Post-D

Average Daily Population (ADP):

- ADP increased 42% between FY 2006 and FY 2008 and 20% between FY 2007 and FY 2008.
- ADP has consistently been below capacity.

Average Length of Stay (LOS):

- In order to accurately account for movement of juveniles between facilities, LOS is calculated at the detaining CSU level. For specific LOS data, refer to pages for CSUs served by this detention home.

Child Care Days (CCD):

- Total number of CCD for FY 2008 was 28,501. This is a 19.5% increase from the previous fiscal year (23,860 CCD).

Dispositional Status:

- 634 pre-dispositional admissions
- 112 post-dispositional admissions without programs including 26 weekend admissions
- 37 post-dispositional admissions with programs

Newport News Juvenile Detention Home

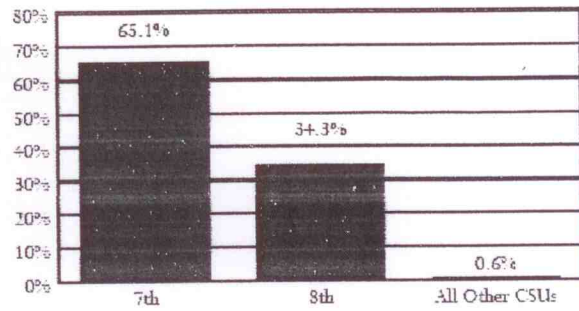
ADMISSIONS BY DETAINING OFFENSE, FY 2008

Most Serious Offense	Pre-Disp.		Post-Disp.	
	Judge Order? No	Yes	With Program? No	Yes
Offense Category				
Abusive Language	0.0%	0.0%	0.0%	0.0%
Alcohol	0.0%	0.0%	1.8%	0.0%
Arson	1.4%	2.2%	0.0%	0.0%
Assault	17.8%	7.1%	8.0%	2.7%
Burglary	14.4%	3.8%	5.4%	24.3%
Contempt of Court	1.6%	23.4%	45.5%	10.8%
Custody	0.0%	0.5%	0.0%	0.0%
Desertion/Support	0.0%	0.0%	0.0%	0.0%
Disorderly Conduct	2.4%	0.5%	0.0%	0.0%
Escapes	3.6%	2.7%	0.0%	2.7%
Extortion	1.0%	0.0%	0.0%	2.7%
Failure to Appear	1.2%	28.3%	6.3%	16.2%
Family Offense	0.0%	0.5%	0.0%	0.0%
Fraud	1.2%	0.0%	0.0%	0.0%
Gangs	0.0%	0.0%	0.0%	0.0%
Kidnapping	0.4%	0.0%	0.0%	0.0%
Larceny	8.4%	5.4%	0.9%	2.7%
Miscellaneous/Other	0.2%	0.5%	0.0%	0.0%
Murder	0.4%	0.0%	0.0%	0.0%
Narcotics	7.6%	1.1%	3.6%	5.4%
Obscenity	0.2%	0.0%	0.0%	0.0%
Obstruction of Justice	1.4%	1.6%	1.8%	5.4%
Prob./Parole Violation ¹	7.0%	12.0%	15.2%	18.9%
Robbery	18.2%	3.3%	0.9%	2.7%
Sex Offense	3.0%	0.0%	0.0%	0.0%
Spousal Abuse	0.0%	0.0%	0.0%	0.0%
Status Offense ²	0.0%	3.3%	2.7%	2.7%
Telephone Law	0.4%	0.0%	0.0%	0.0%
Traffic	0.6%	0.0%	3.6%	0.0%
Trespass	0.2%	1.1%	0.9%	0.0%
Vandalism	2.0%	2.2%	1.8%	0.0%
Weapons	5.0%	0.5%	1.8%	2.7%
Offense Severity				
Felonies:				
- Against Persons	40.6%	9.8%	2.7%	2.7%
- Weapons/Narcotics	9.4%	0.0%	0.9%	5.4%
- Other	21.4%	9.8%	5.4%	29.7%
Class 1 Misdemeanors:				
- Against Persons	7.4%	3.8%	7.1%	8.1%
- Other	12.0%	33.2%	17.0%	21.6%
Prob./Parole Violation ¹	7.0%	12.0%	15.2%	18.9%
Court Order Violation	1.6%	26.6%	45.5%	10.8%
Status Offense ²	0.0%	3.3%	2.7%	2.7%
Others	0.2%	1.6%	3.6%	0.0%
Offense Information Missing	0.4%	0.0%	0.0%	0.0%
Total Admissions	500	184	112	37

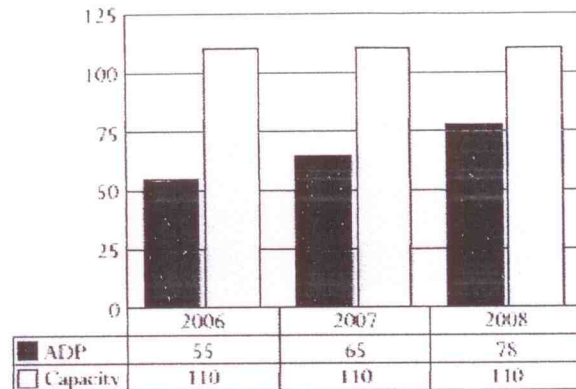
1, 2-Variations are due to slightly different offense categorization.

All data were downloaded on 11/13/2008. Any changes after that date are not reflected in this book. Percentages may not add to 100% due to rounding.

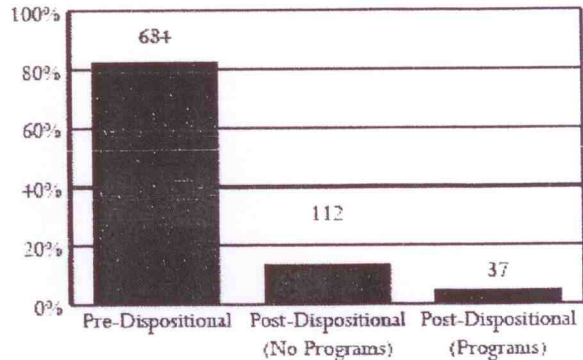
ADMISSIONS BY COURT DISTRICT, FY 2008



AVERAGE DAILY POPULATION VS CAPACITY, FY 2006-2008



ADMISSIONS BY DISPOSITIONAL STATUS, FY 2008



Newport News Juvenile Detention Home

FACILITY DESCRIPTION:

The facility was opened at the current location on January 10, 2005. Residents are housed in an 11 pod/suite system, with a staffing ratio of ten residents to one staff per pod. The new facility includes an educational suite comprised of eight classrooms, a computer lab/library, school administrative offices, and medical suite. There is a mental health services unit that houses the Community Services Board staff and a senior social worker. This allows one-on-one therapeutic services within individual offices. There is an intake suite for processing of residents. The facility has ample space for recreation, food services, and support services.

PROGRAM DESCRIPTION:

The Newport News Detention Home is a secure detention facility. Included in the facility is a Post-Disposition Program for 20 residents. The Newport News City School System provides the educational services to the residents. An array of services are provided in arts and crafts, social skills development, basic reading, writing, and math. These classes are tailored to meet the needs of each resident in preparation for life experiences. The city has based a principal, ten teachers, and a secretary at the facility to operate the school program.

Since the last audit, the Juvenile Services School Department added a reading resource teacher. This addition has helped the residents, who are identified as low-functioning in reading, get individualized attention.

The Post-Dispositional Program has provided youth the opportunity to obtain employment while in the program and attend college courses. One youth graduated with his regular high school class and continued his education by taking online Nova Net Classes. A total of 14 youth passed the GED test in FY 2007 and 2008.

The Post-Dispositional Master Gardner Program has experienced great success. There is a widespread support for the program in the facility and the surrounding community. Local businesses established partnerships, donated supplies, and helped with volunteers to teach various sessions of the classes. The youth are very excited about the greenhouse plants and look forward to the plant sale each year to help raise money for the Post-D Program.

The Post-D Melody Makers music group members started out with no formal musical training. One counselor, who is a school-trained music instructor, spends countless hours providing music training to the youth. The Melody Makers have performed for programs within the facility, the Newport News-Hampton community, and in Richmond at a function that was attended by Governor Kaine.

SERVICES PROVIDED:

- Direct:
 - Family visitation
 - Social work services
 - Medical services
 - Educational enrichment services
 - Peer social and recreational services
 - Food services
 - Population management

Newport News Juvenile Detention Home

- Service accessed in the community:
 - Religious and volunteer group activities
 - Educational programming
 - Mental health services

AUDIT PROCESS:

The audit team determined compliance through a series of observations, interviews, and reviews of various documentation.

- Interviews: Staff (5)
 Residents (6)
- Files Reviewed: Personnel (21)
 Training records (21)
 Residents (6)

RESULT OF INTERVIEWS:

The interviews with residents and staff indicated that staff had a good working knowledge of the programs in the detention facility. The residents felt safe, secure in the facility, and said staff were fair.

FINDINGS:

Total Number of Applicable Standards:	367
Number of Mandatory Standards:	61
Number of Non-Mandatory Standards:	301

Number of Deficiencies:	8- Non-Mandatory	3 - Mandatory
-------------------------	------------------	---------------

97% compliance rating.

No repeat deficiencies from the previous audit

A corrective action plan from the facility is attached for review and acceptance by the Board.

RECOMMENFATION: Certify Newport News Detention Home and Post-Dispositional Detention Program for three years.

**CORRECTIVE ACTION PLAN
TO THE
BOARD OF JUVENILE JUSTICE**

FACILITY/PROGRAM: Newport News Juvenile Detention Center and Post-Dispositional Detention Program

PROGRAM ADMINISTRATOR: Larry Robinson

CERTIFICATION AUDIT DATES: February 3-5, 2009

CERTIFICATION ANALYST: Paul Reaves, Jr.

Under Planned Corrective Action indicate: 1) The cause of the identified area of non-compliance. 2) The effect on the program. 3) Action that has been taken/will be taken to correct the standard cited. 4) Action that will be taken to ensure that the problem does not recur.

6VAC35-140-250

Written policy, procedure, and practice of the juvenile residential facility shall provide that there is a suicide prevention and intervention program developed in consultation with a qualified medical or mental health professional, and all direct care staff are trained in the implementation of the program.

Finding:

There was no written documentation that the facility suicide prevention and intervention plan was developed in consultation with qualified medical and mental health professionals and that all direct care staff were trained in the implementation of this program.

Cause:

The program was developed with input from mental health and medical staff but there were no signatures to validate this fact.

Effect on Program:

Policy and procedures regarding suicide prevention require signatures of participants to validate and implement.

Planned Corrective Action:

Signatures of all participants have been obtained. The current training database has been updated to include course descriptions and objectives so that, in the future, a course description may be provided for certification purposes. A notation will also be added to the training module.

Completion Date:

April 2009.

Person Responsible:

Ms. Annette Sigley, Ms. Marcella Williams, & CSB Representative.

