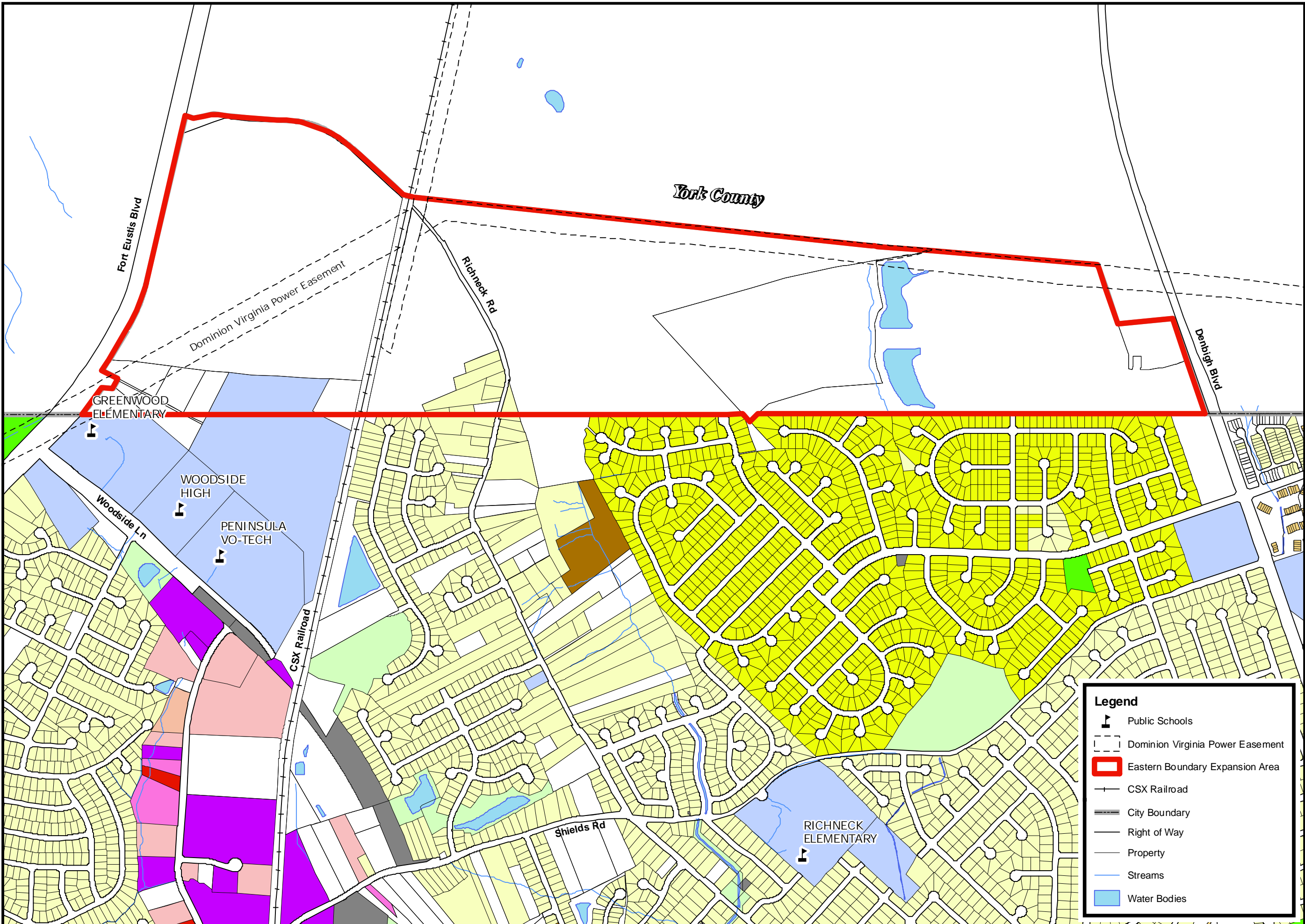




Map 3

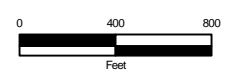
Existing Land Use

- VACANT
- COMMUNITY FACILITIES
- GOVERNMENT
- LIGHT INDUSTRIAL
- HEAVY INDUSTRIAL
- HIGHWAY ORIENTED
- VERY LOW DENSITY
- LOW DENSITY
- MEDIUM DENSITY
- HIGH DENSITY
- MIXED USE
- OFFICE
- PARKS & OPEN SPACE
- RESEARCH/DEVELOPMENT
- RETAIL
- TRANSPORTATION FACILITIES
- UTILITIES
- WETLANDS



**Legend**

- Public Schools
- Dominion Virginia Power Easement
- Eastern Boundary Expansion Area
- CSX Railroad
- City Boundary
- Right of Way
- Property
- Streams
- Water Bodies

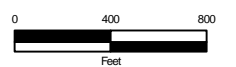


Any determination of topography or contours, or any depiction of physical improvements, property lines or boundaries is for general information only and shall not be used for the design, modification, or construction of improvements to real property or for food plain determination.

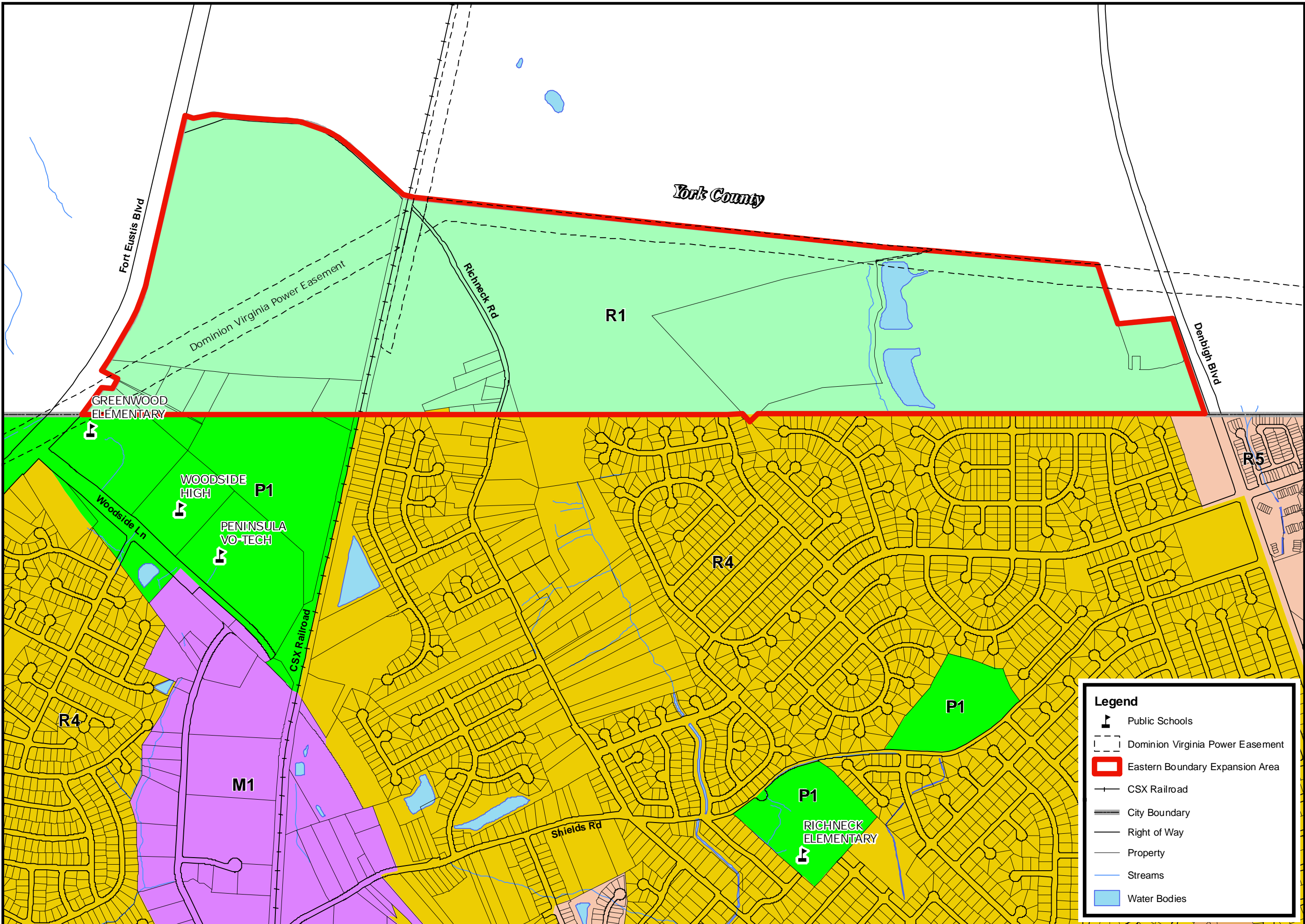


Zoning

- R1 - SINGLE-FAMILY
- R2 - SINGLE-FAMILY
- R3 - SINGLE-FAMILY
- R4 - SINGLE-FAMILY
- R5 - LOW DENSITY MULTI-FAMILY
- R6 - MANUFACTURED HOME
- R7 - MED DENSITY MULTI-FAMILY
- R8 - HIGH DENSITY MULTI-FAMILY
- R9 - MIXED USE
- P1 - PARK
- O1 - OFFICE
- O2 - OFFICE PARK
- O3 - OFFICE/RESEARCH AND DEVELOPMENT
- C1 - RETAIL COMMERCIAL
- C2 - GENERAL COMMERCIAL
- C3 - REGIONAL BUSINESS DISTRICT
- C4 - OYSTER POINT BUSINESS
- C5 - OYSTER POINT BUSINESS/MANUFACTURING
- M1 - LIGHT INDUSTRIAL
- M2 - HEAVY INDUSTRIAL



Any determination of topography or contours, or any depiction of physical improvements, property lines or boundaries is for general information only and shall not be used for the design, modification, or construction of improvements to real property or for flood plain determination.



**Legend**

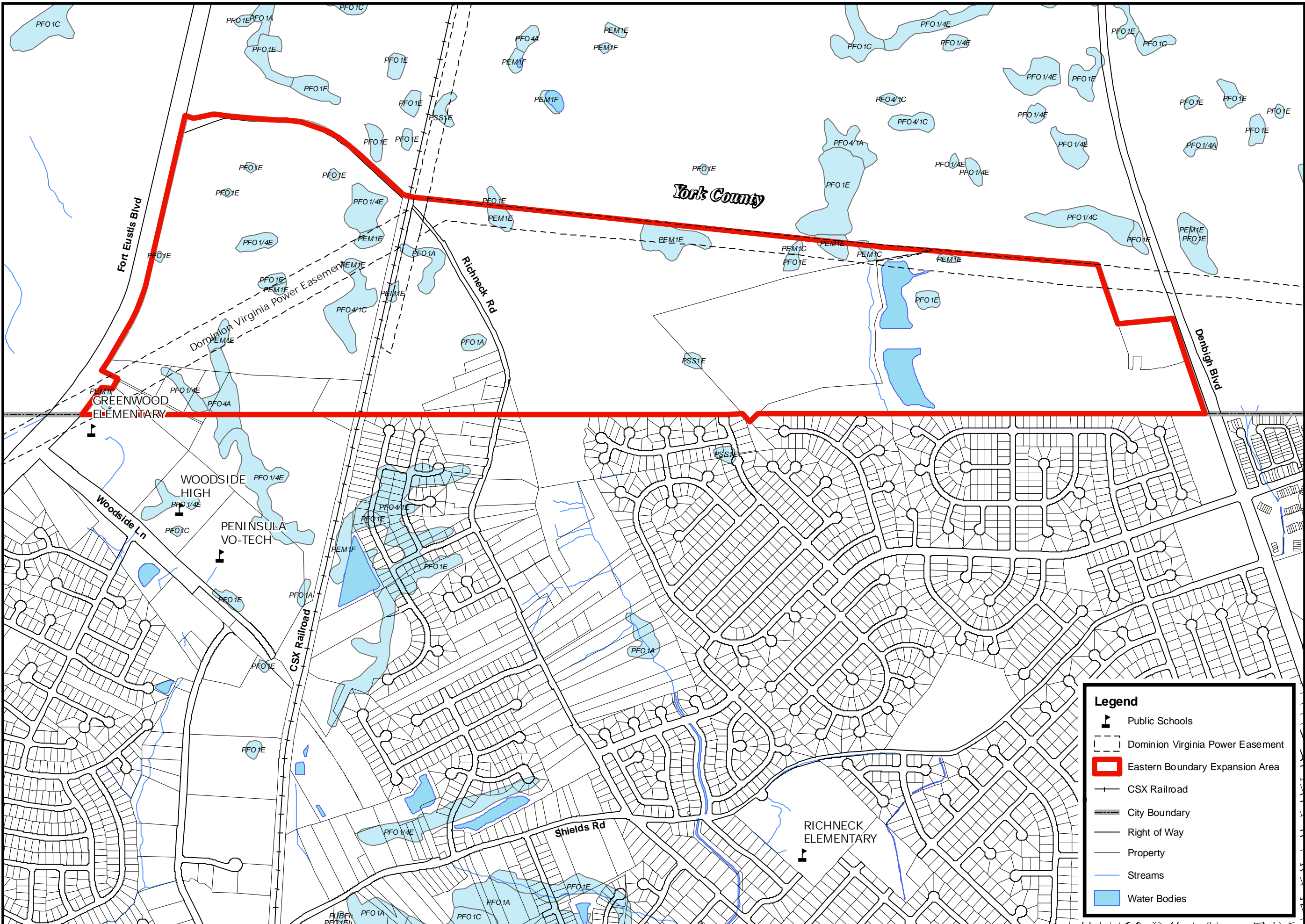
- Public Schools
- Dominion Virginia Power Easement
- Eastern Boundary Expansion Area
- CSX Railroad
- City Boundary
- Right of Way
- Property
- Streams
- Water Bodies



Map 5

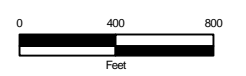
Wetlands

- National Wetland Inventory Wetlands



**Legend**

- Public Schools
- Dominion Virginia Power Easement
- Eastern Boundary Expansion Area**
- CSX Railroad
- City Boundary
- Right of Way
- Property
- Streams
- Water Bodies



Any determination of topography or contours, or any depiction of physical improvements, property lines or boundaries is for general information only and shall not be used for the design, modification, or construction of improvements to real property or for food plain determination.