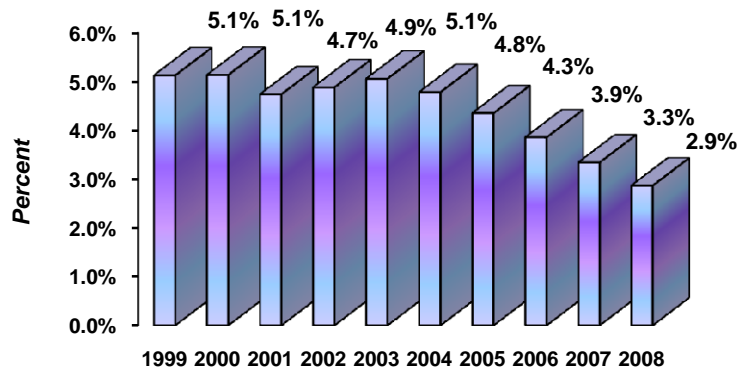


**City of Newport News, Virginia**  
**Ratios of General Bonded Debt Outstanding**  
**Last Ten Fiscal Years**

Fiscal Year	Population	Assessed Value of Real Property	General Obligation Bonds	Less Debt Service	Net Bonded Debt	Net Bonded Debt as % of Assessed Valuation	Net Bonded Debt Per Capita
1999	184,600	6,861,855	352,035	481	351,554	5.1%	1,904
2000	185,700	7,055,219	362,214	136	362,078	5.1%	1,950
2001	180,150	7,298,721	347,170	1,567	345,603	4.7%	1,918
2002	180,305	7,406,809	363,037	1,790	361,247	4.9%	2,004
2003	181,640	7,807,813	397,114	2,501	394,613	5.1%	2,173
2004	185,200	8,301,266	399,243	2,524	396,719	4.8%	2,142
2005	185,240	9,042,610	394,354	1,137	393,217	4.3%	2,123
2006	186,000	10,404,207	401,020	319	400,701	3.9%	2,154
2007	186,000	12,293,454	411,567	1,307	410,260	3.3%	2,206
2008	187,200	14,286,003	411,159	2,139	409,020	2.9%	2,185

Note: Population figures are derived as follows: 1999 - 2000; 2003 - 2008 City estimates, 2001 and 2005 Census Bureau, 2002 Virginia Employment Commission

**Debt as % of Assessed Property Value**



**Debt per Capita**

