

City of Newport News, Virginia
**RATIO OF DEBT TO ASSESSED VALUE AND DEBT PER CAPITA
 LAST TEN FISCAL YEARS**

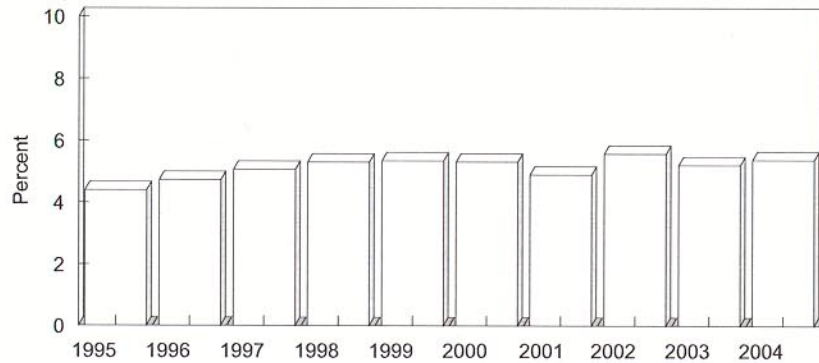
(000's Omitted)

Fiscal Year	Population (1)	Assessed Value Of Real Property	Gross Bonded Debt	Less Debt Service Fund (2)	Exemptions From Debt Limit (3)	Net Bonded Debt	Net Bonded Debt as % of Assessed Valuation	Net Bonded Debt Per Capita
1995	180,463	6,248,771	369,768	1,110	94,425	274,233	4.4%	1,520
1996	182,132	6,409,340	393,647	704	90,260	302,683	4.7%	1,662
1997	183,185	6,501,400	441,972	706	112,600	328,666	5.1%	1,794
1998	182,190	6,650,651	460,061	474	107,615	351,972	5.3%	1,932
1999	184,600	6,861,855	495,911	481	128,990	366,440	5.3%	1,985
2000	185,700	7,055,219	525,967	136	151,305	374,526	5.3%	2,017
2001	180,150	7,298,721	501,299	1,567	142,525	357,207	4.9%	1,983
2002	180,305	7,406,809	592,652	1,790	178,215	412,647	5.6%	2,289
2003	181,640	7,807,813	597,622	2,501	189,110	406,011	5.2%	2,235
2004	185,200	8,301,266	626,473	2,524	178,025	445,924	5.4%	2,408

- (1) Population figures are derived as follows: 1995-2000; 2003 - 2004 City estimate, 2001 Census Bureau, 2002 Virginia Employment Commission
- (2) Amount available for repayment of general obligation bonds.
- (3) Includes Public Utility bonds which are retired through water revenues to extent bond issuance as approved by through referendum.

Debt as % of Assessed Property Value

Last Ten Fiscal Years



Debt per Capita

Last Ten Fiscal Years

